

Congratulations on your new DataBank Datalogger. If you need assistance, technical specialists are available to answer your questions at 408-749-0994 or toll-free at 877-316-8049. This Quick Start Guide will help you set up the DataBank Datalogger to begin collecting data as quickly as possible.

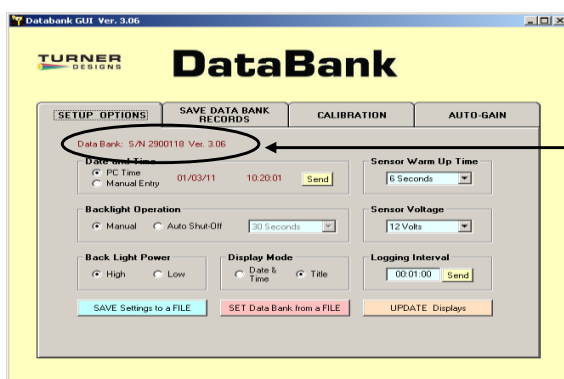


1 Setup

Setup is required before proceeding with calibration.

NOTE: The DataBank should not be connected to an external power source when connecting to the DataBank GUI.

1. Press the DataBank's Power button and the unit will turn on.
2. Select the parameter group (1-16) you wish to calibrate by pressing the DataBank's Select button to scroll through the parameter groups.
3. Connect the DataBank to a PC that has DataBank Software using the interface cable provided.
4. Begin DataBank Software and wait for a connection.
5. The DataBank is connected when the serial number and software version are displayed in the upper left corner of the screen.



Upon connection, the DataBank's serial number and version of the operating system are displayed

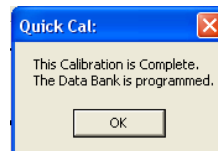
6. Once a connection has been established click the Calibration tab in the DataBank Software.
7. Choose the parameter group you wish to calibrate from the pull down menu (should be the same group as was chosen in Step #2).
8. Name the parameter group by typing into the available box and hitting enter; users can enter up to 16 characters.
9. Click the Auto Gain tab and set the gain values using the Default buttons; gain values may also be entered manually.
10. Click the Calibration tab; the DataBank should show Low, Med, or High in the top right corner of the DataBank's display. **Note: If the letter "s" followed by four numbers is displayed instead of Low, Med, or High, make sure you are using the latest DataBank software and repeat Steps 8 and 9.**

2 Calibration

There are several options for calibrating sensors with the DataBank. Please refer to the User's Manual for other options.

Raw Fluorescence Units Blanked

- 1) After completing Setup Steps 1-10 above place the sensor in your blank solution and click "OK – proceed to step 2".
- 2) The Software will start measuring the blank signal for each gain.
- 3) When blanking has finished click "OK – proceed to step 3".
- 4) From the pull down menu choose RFUB (Raw Fluorescence Units Blanked), click "Finalize Calculations" and wait; "Talking with DataBank" will be flashing in the upper right corner during finalization.
- 5) The following screen will appear when finalizing calculations has completed.



- 6) Click OK to complete the calibration

The DataBank is now ready for use and you may begin measuring samples. Values will be reported as blank corrected Raw Fluorescence Units (RFUB). RFUB values can be post calibrated if concentration estimates are required.