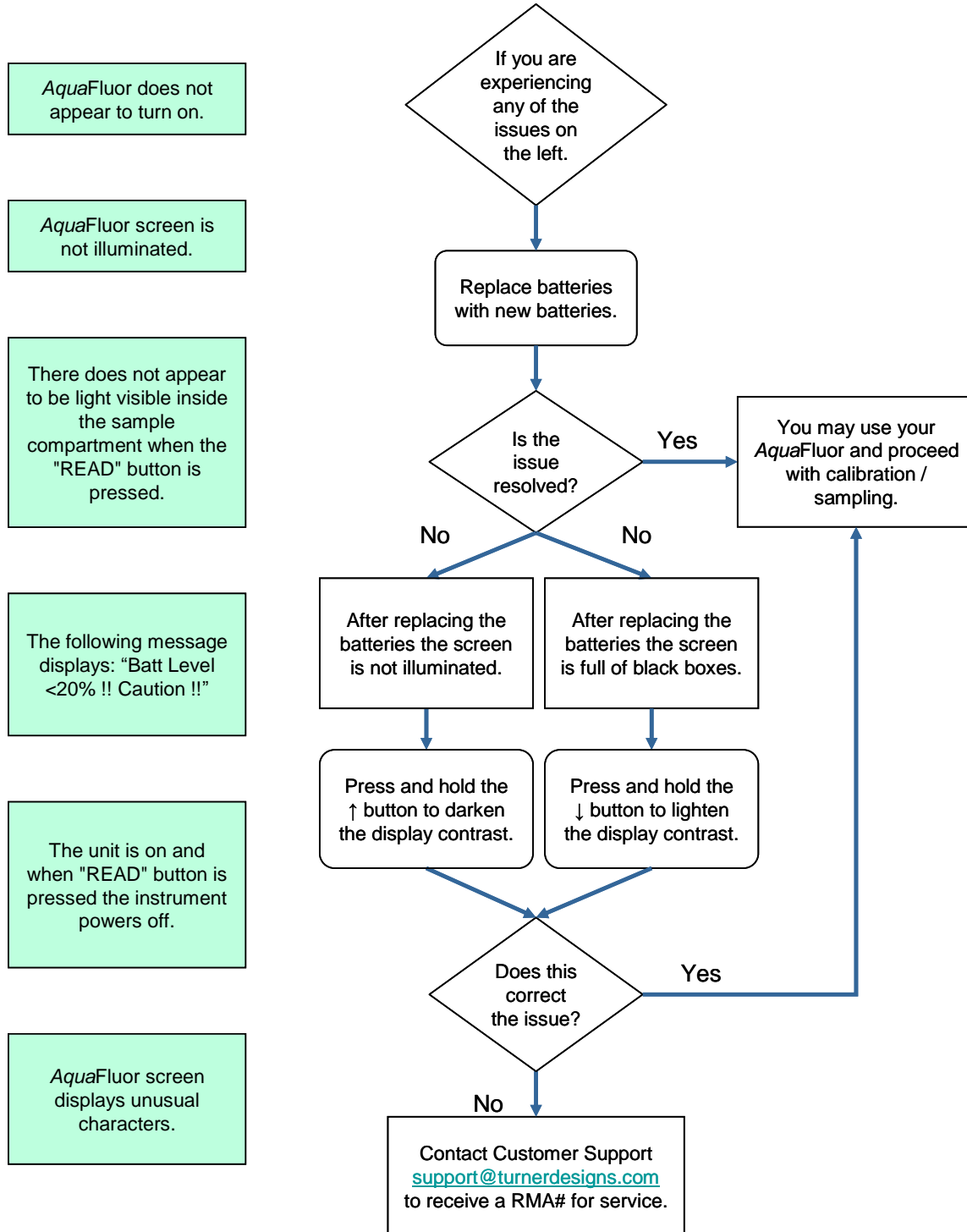
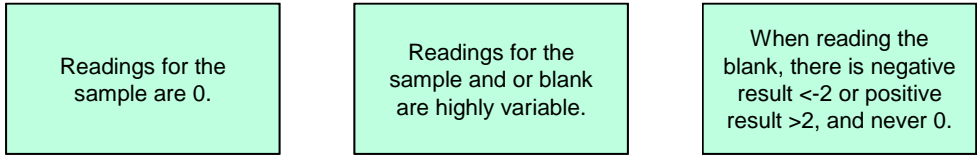


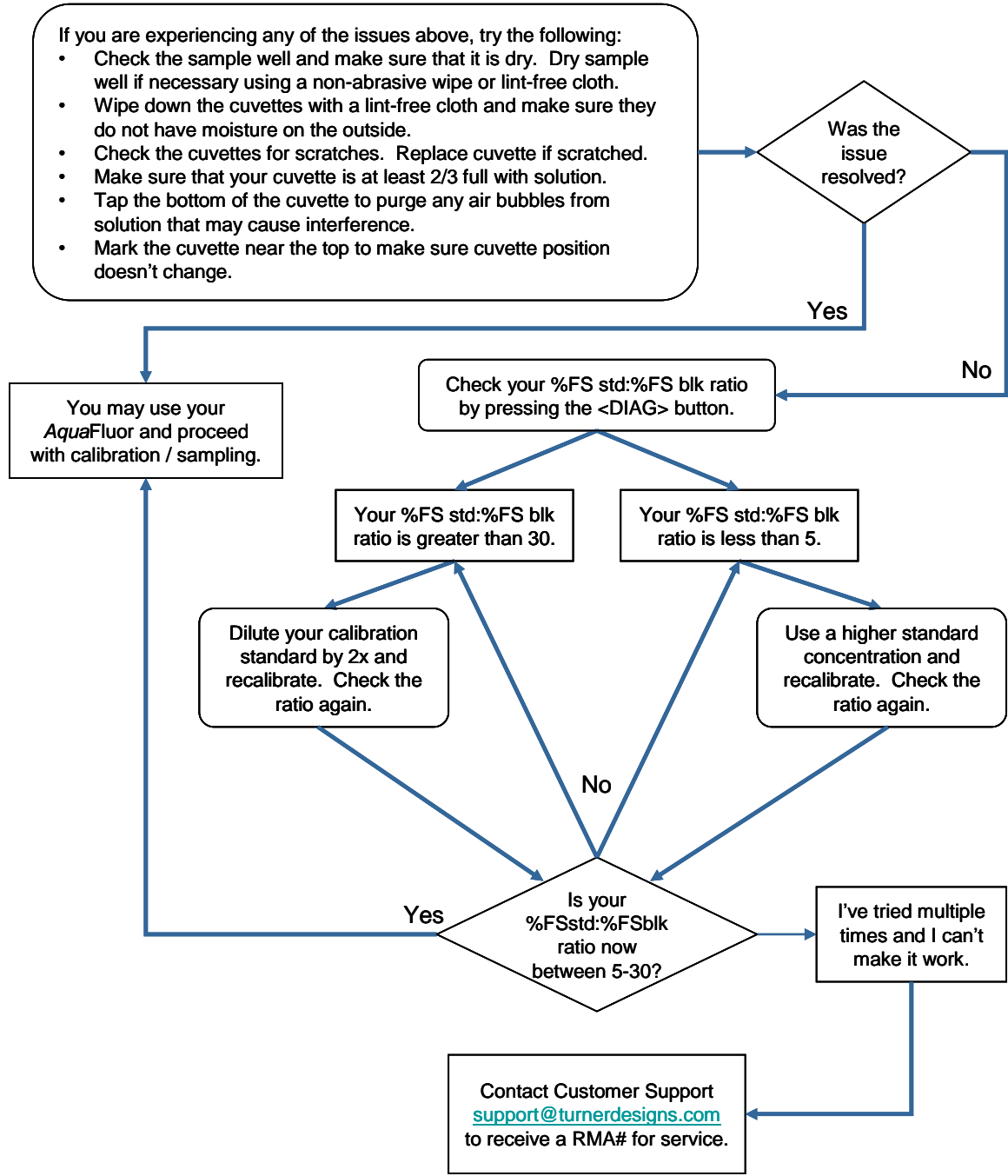
The AquaFluor™ is, generally, a trouble-free solid-state instrument. However, there have been a few issues reported that can easily be diagnosed and/or resolved in the field. Please use this guide to address some common Power / Battery / Screen Issues:



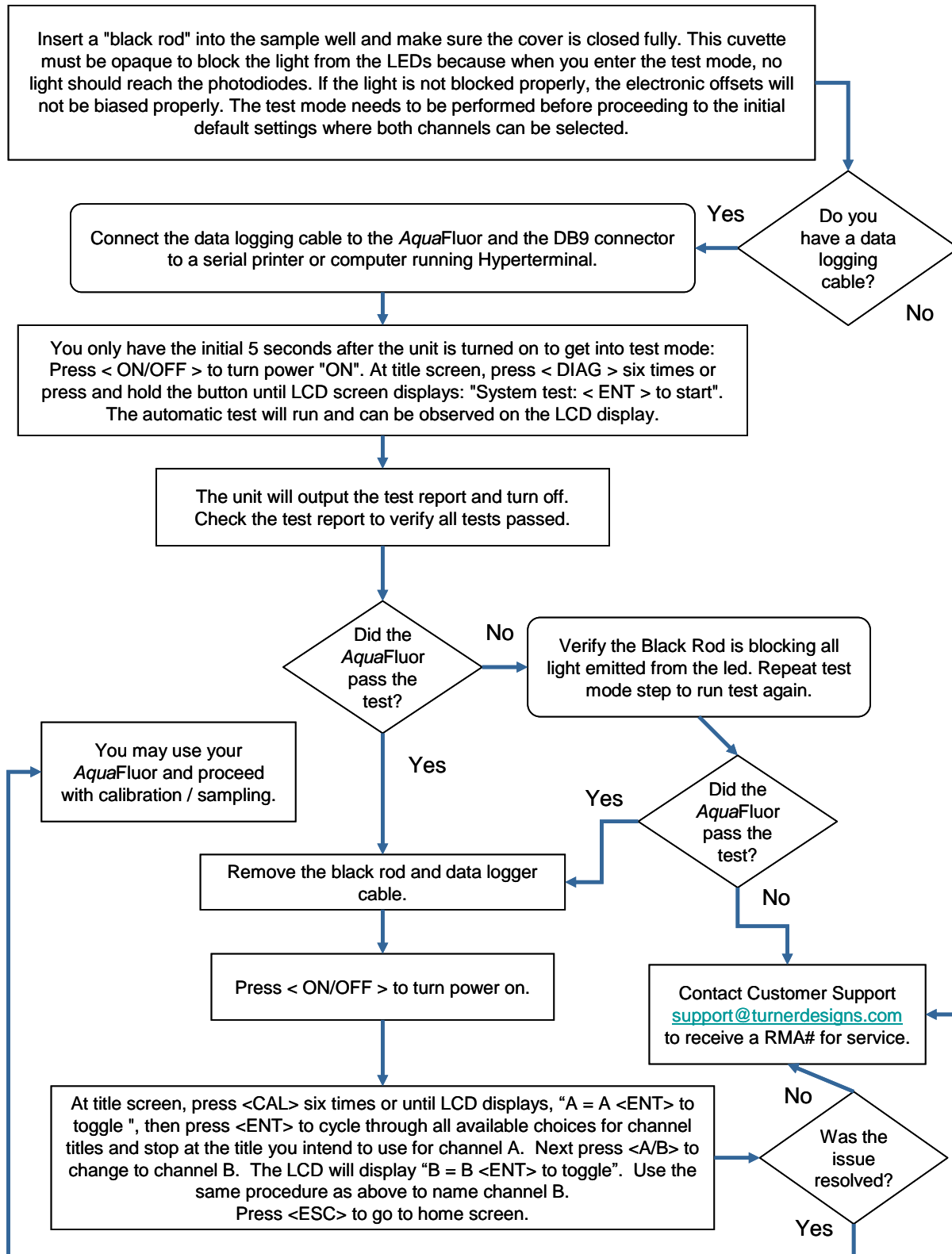
Please use this guide to address some common Reading / Calibration Issues:



- If you are experiencing any of the issues above, try the following:
- Check the sample well and make sure that it is dry. Dry sample well if necessary using a non-abrasive wipe or lint-free cloth.
 - Wipe down the cuvettes with a lint-free cloth and make sure they do not have moisture on the outside.
 - Check the cuvettes for scratches. Replace cuvette if scratched.
 - Make sure that your cuvette is at least 2/3 full with solution.
 - Tap the bottom of the cuvette to purge any air bubbles from solution that may cause interference.
 - Mark the cuvette near the top to make sure cuvette position doesn't change.



Please Follow the Steps Below to Recover a Lost Channel:



Please use this guide to address some common Connection Issues:

